

Homes

Resort-style Retirement

The Wakefield

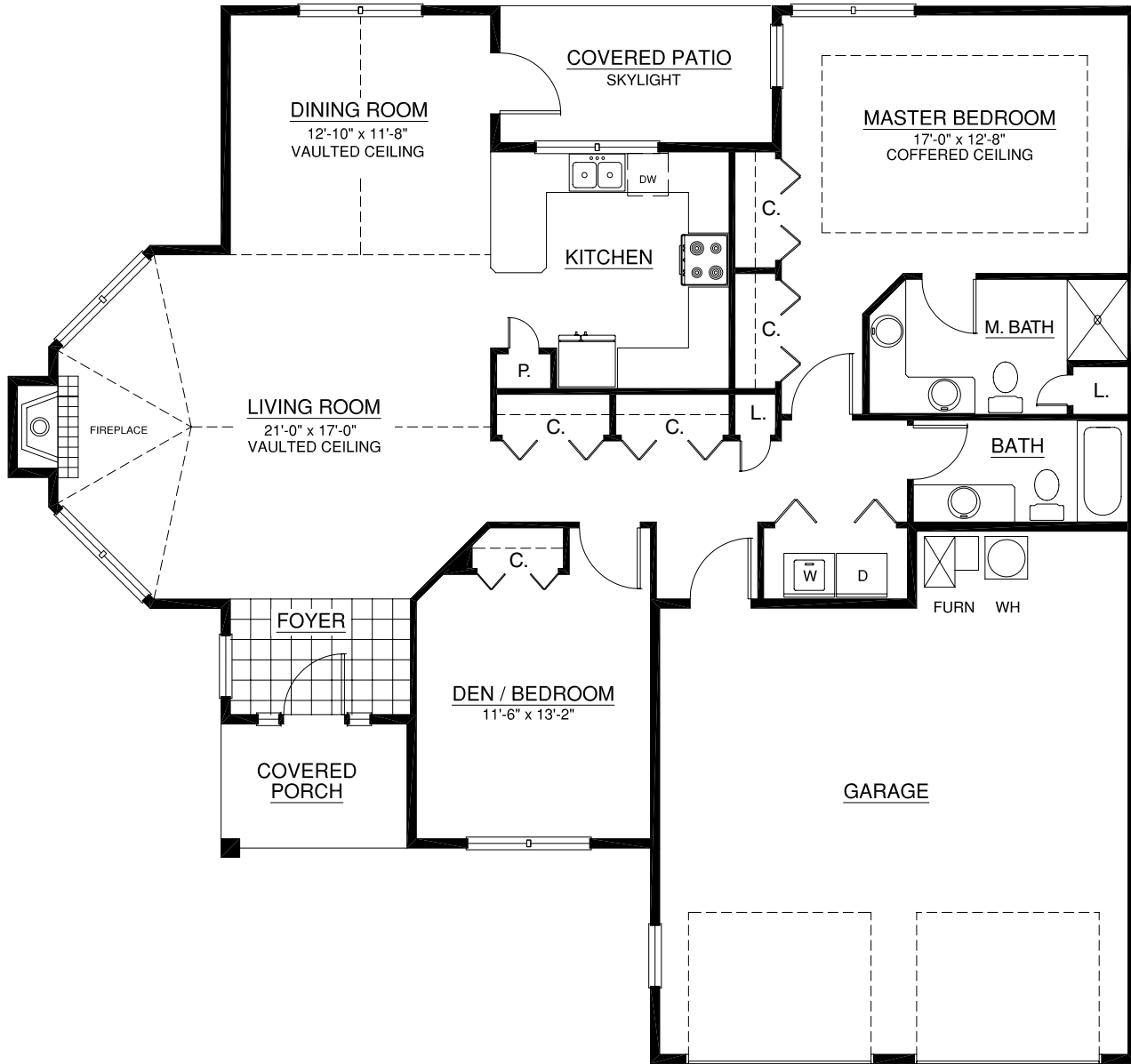
Main 1,528 sq. ft. | Garage 580 sq. ft.

2 Bedroom | 2 bath



A Touchmark® community
Est. 1980

For illustration purposes only. Square footage, actual room sizes, and features may vary. See construction documents.



Waterford at Fairway Village

2911 SE Village Loop | Vancouver, WA 98683 | 360-254-2866 | 800-414-7575 | WaterfordVancouver.com



Homes

Resort-style Retirement

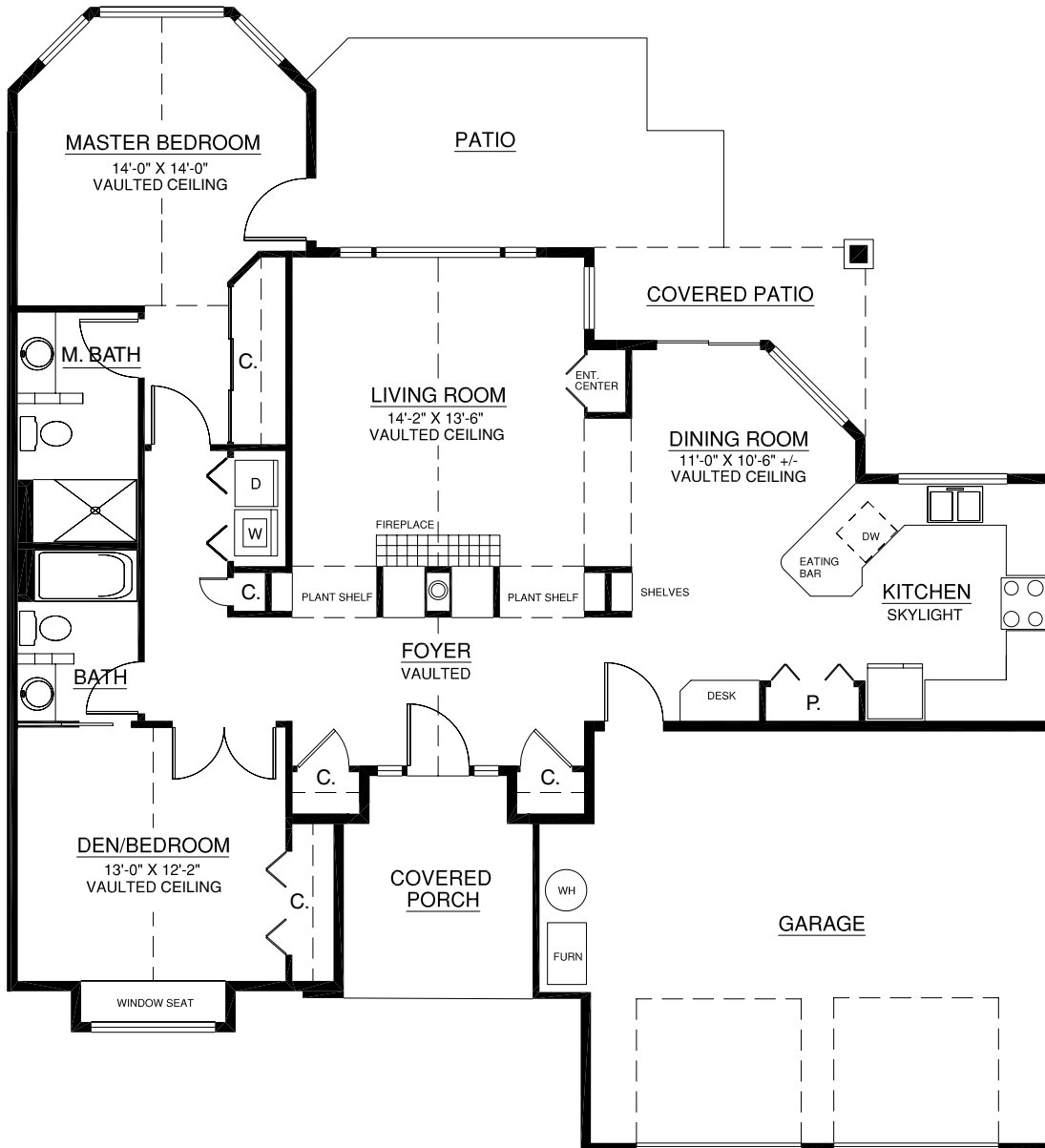
The Willamette

Main 1,437 sq. ft. | Garage 484 sq. ft.
2 Bedroom | 2 bath



A Touchmark® community
Est. 1980

For illustration purposes only. Square footage, actual room sizes, and features may vary. See construction documents.



Waterford at Fairway Village

2911 SE Village Loop | Vancouver, WA 98683 | 360-254-2866 | 800-414-7575 | WaterfordVancouver.com



Homes

Resort-style Retirement

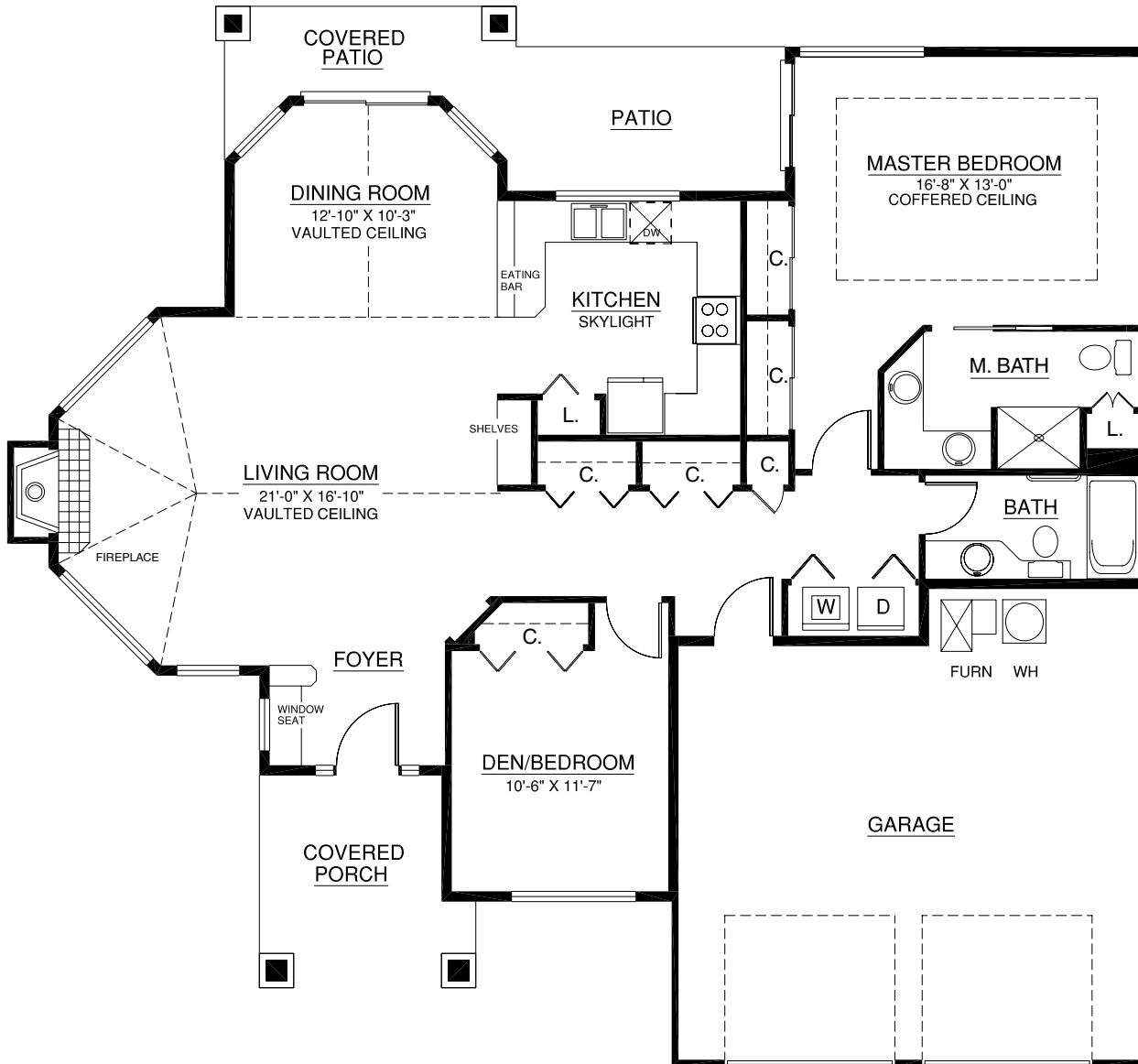
The Jefferson

Main 1,461 sq. ft. | Garage 502 sq. ft.
2 Bedroom | 2 bath



A Touchmark® community
Est. 1980

For illustration purposes only. Square footage, actual room sizes, and features may vary. See construction documents.



Waterford at Fairway Village

2911 SE Village Loop | Vancouver, WA 98683 | 360-254-2866 | 800-414-7575 | WaterfordVancouver.com



Homes

Resort-style Retirement

The Dartmouth

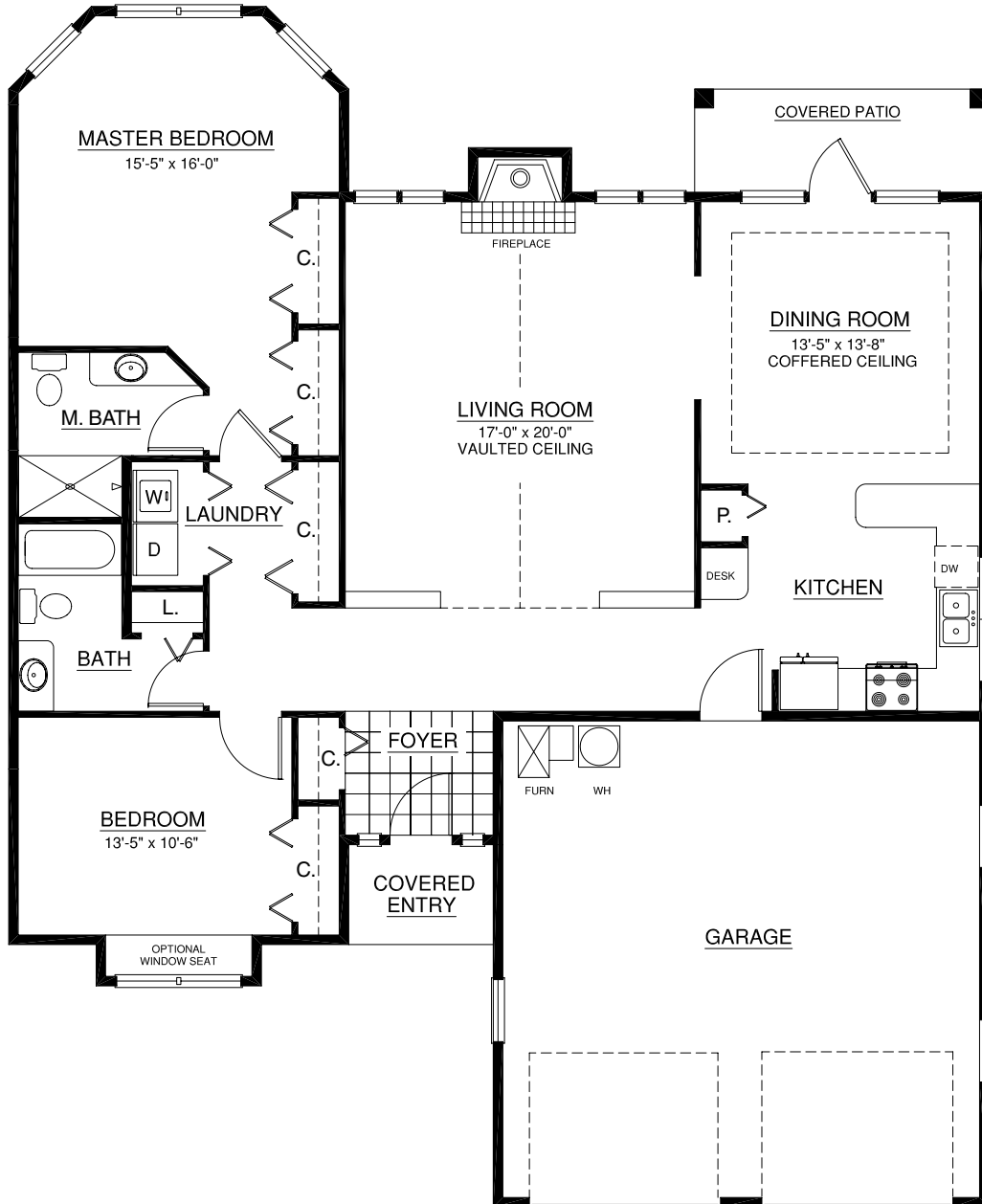
Main 1,567 sq. ft. | Garage 570 sq. ft.

2 Bedroom | 2 bath



A Touchmark® community
Est. 1980

For illustration purposes only. Square footage, actual room sizes, and features may vary. See construction documents.



Waterford at Fairway Village

2911 SE Village Loop | Vancouver, WA 98683 | 360-254-2866 | 800-414-7575 | WaterfordVancouver.com



Homes

Resort-style Retirement

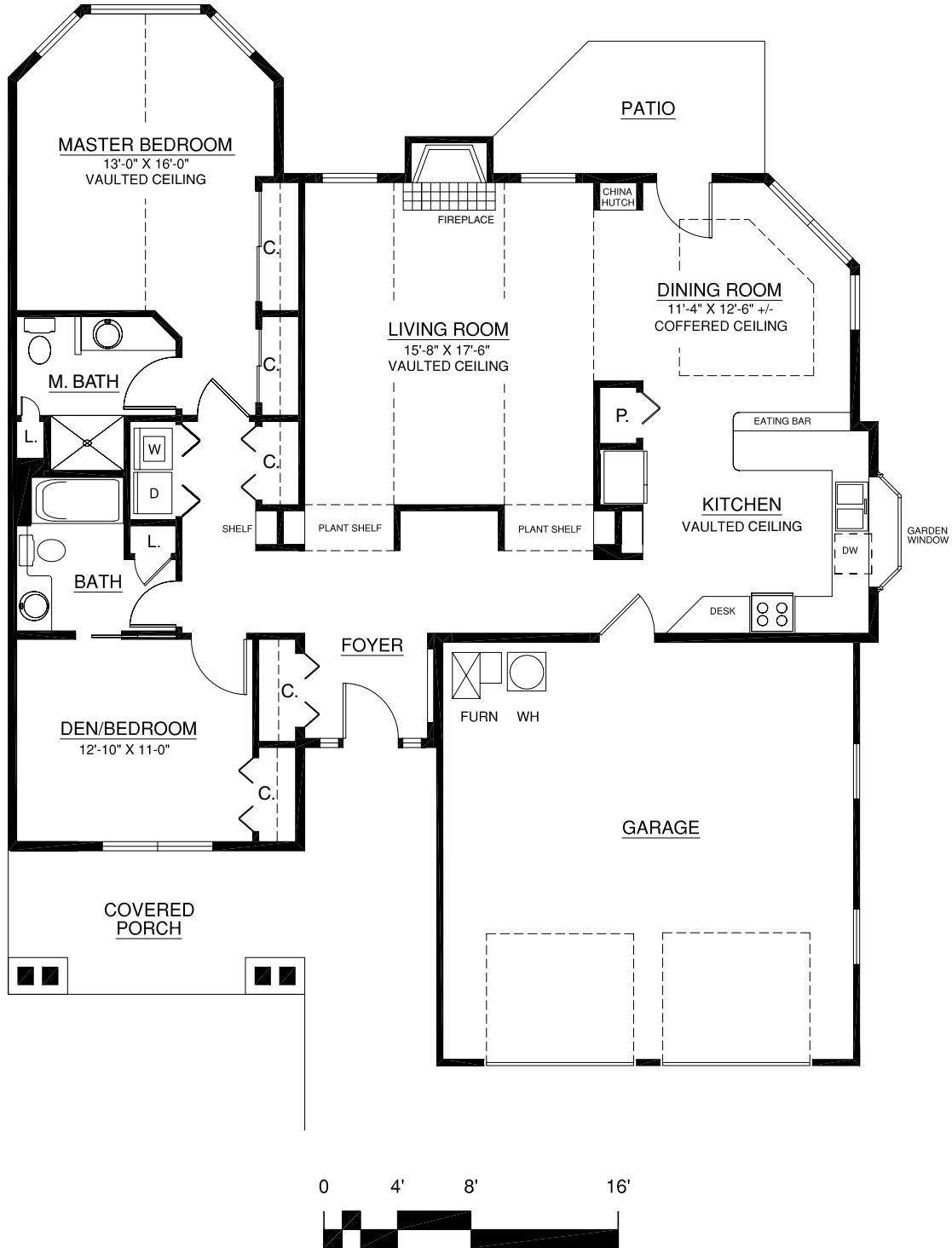
The Cascade

Main 1,531 sq. ft. | Garage 534 sq. ft.
2 Bedroom | 2 bath



A Touchmark® community
Est. 1980

For illustration purposes only. Square footage, actual room sizes, and features may vary. See construction documents.



Waterford at Fairway Village

2911 SE Village Loop | Vancouver, WA 98683 | 360-254-2866 | 800-414-7575 | WaterfordVancouver.com



Homes

Resort-style Retirement

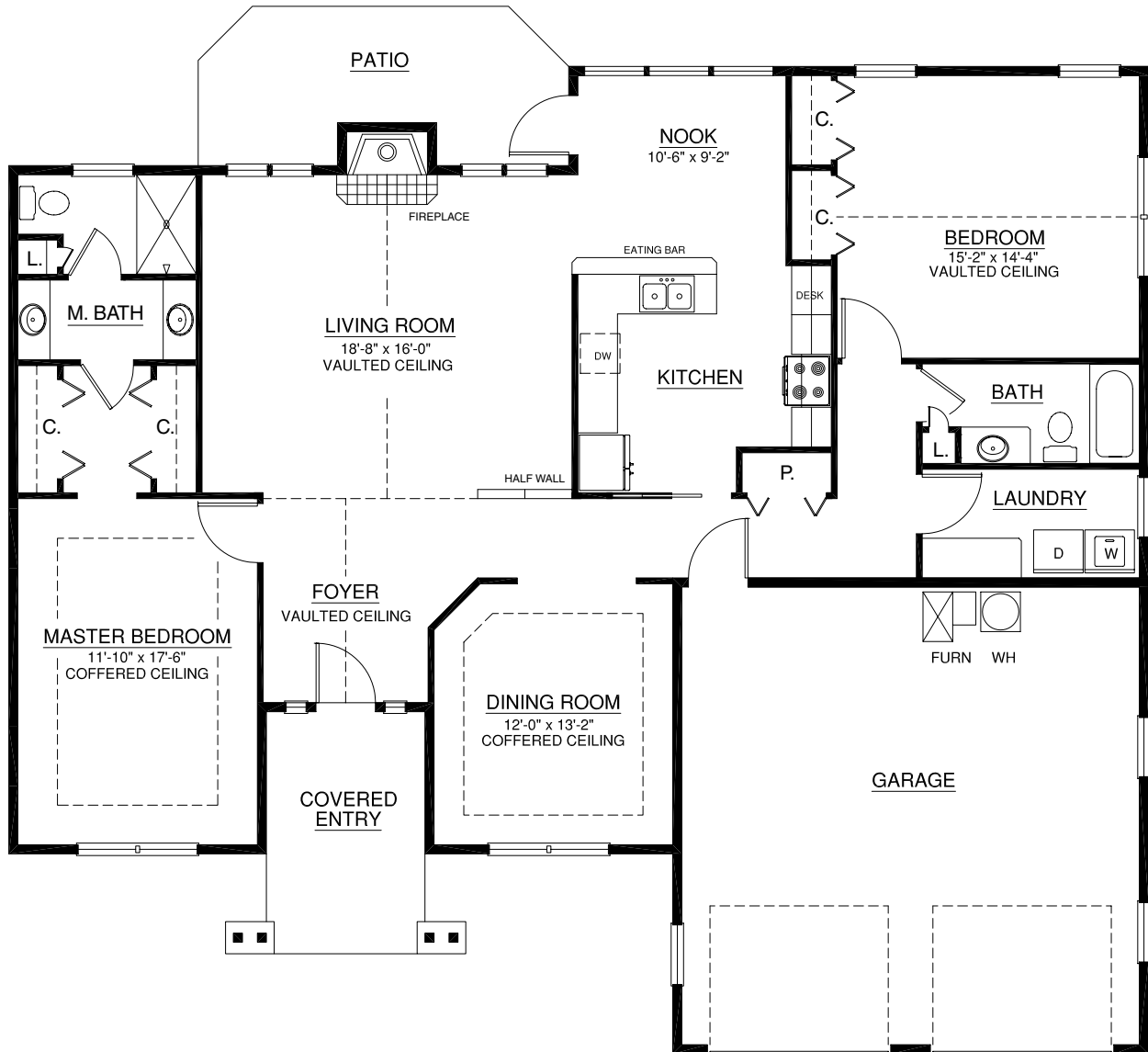
The Belmont

Main 1,761 sq. ft. | Garage 576 sq. ft.
2 Bedroom | 2 bath



A Touchmark® community
Est. 1980

For illustration purposes only. Square footage, actual room sizes, and features may vary. See construction documents.



Waterford at Fairway Village

2911 SE Village Loop | Vancouver, WA 98683 | 360-254-2866 | 800-414-7575 | WaterfordVancouver.com

